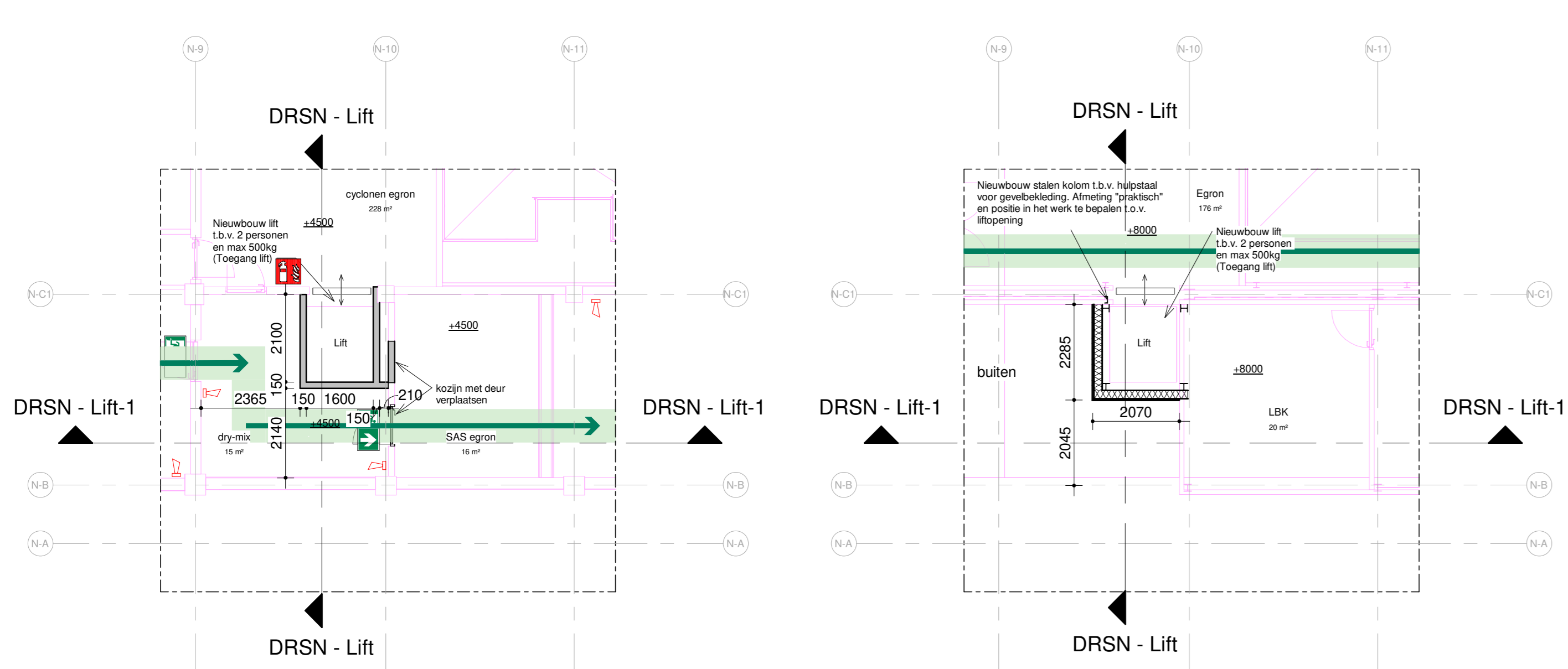
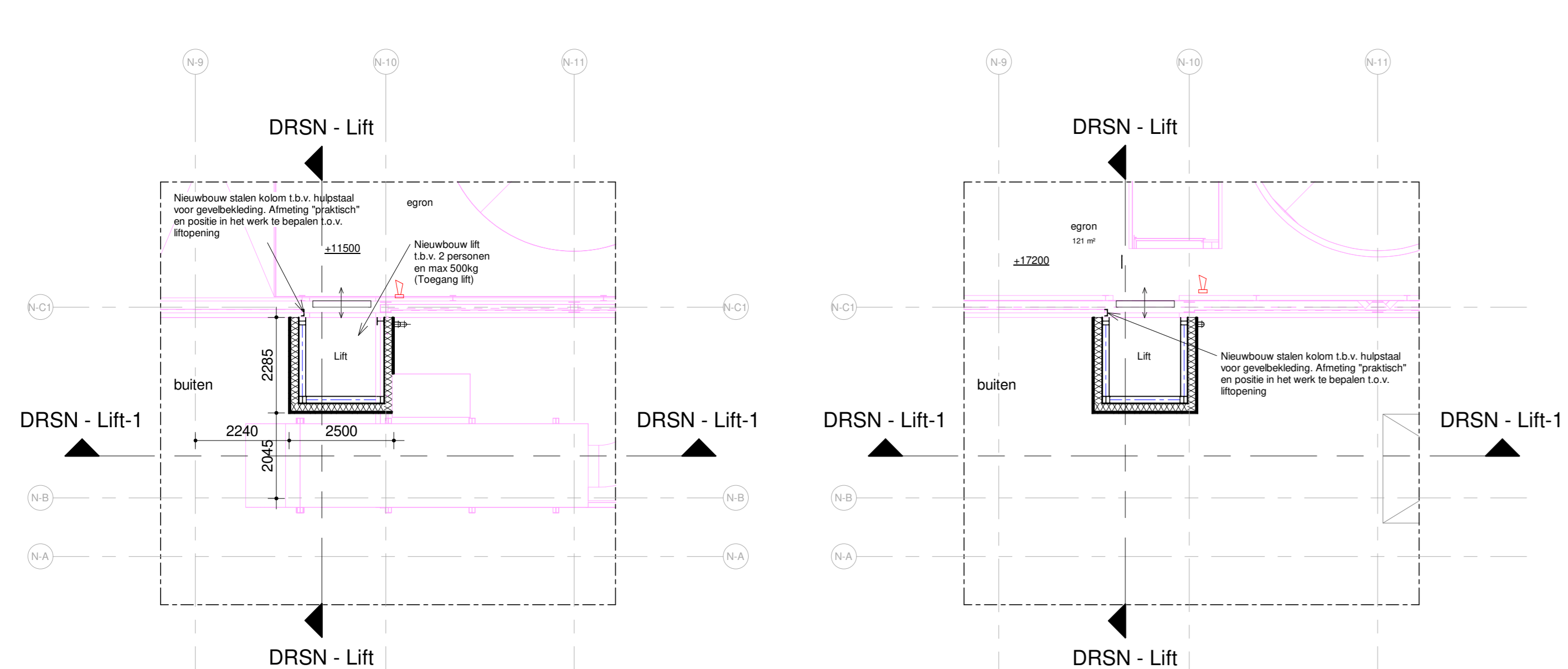


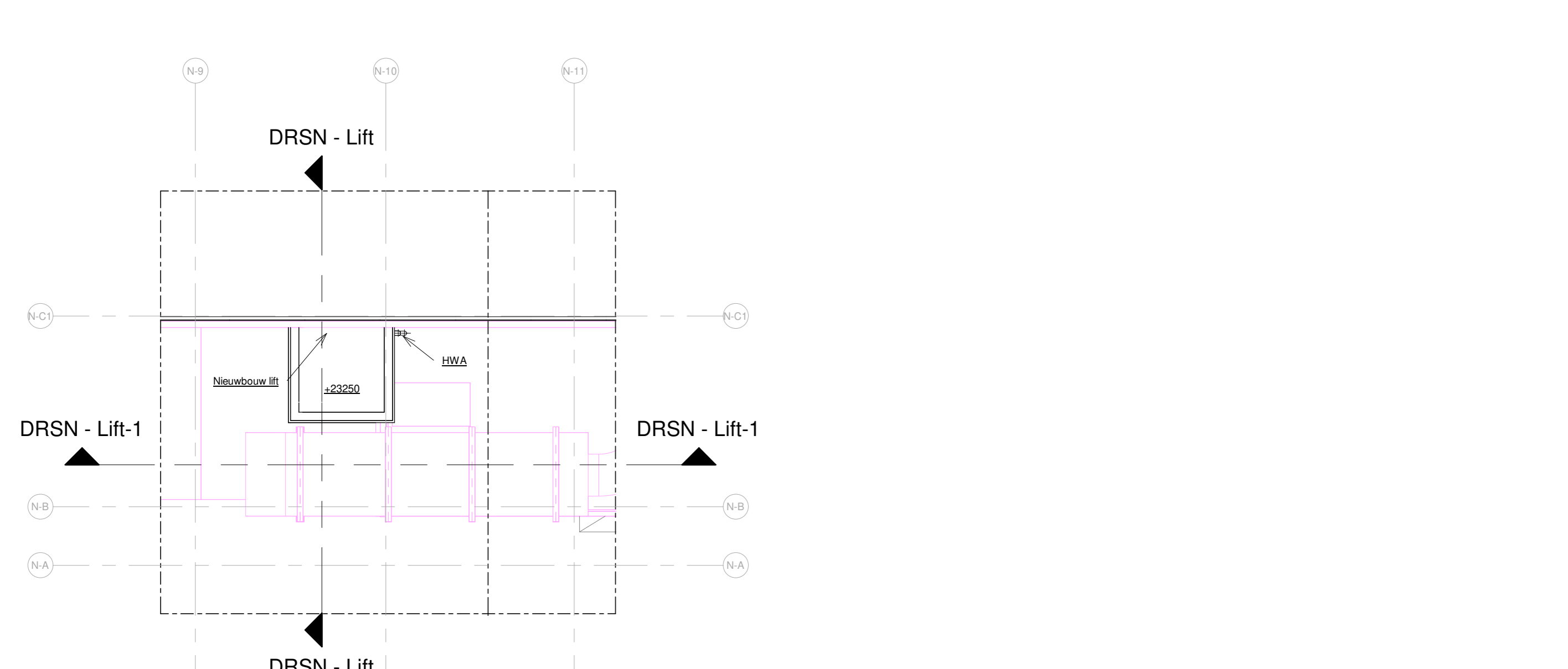
-1550



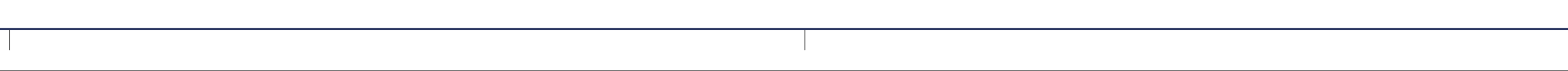
+1000



+4500



+8000 Lift



+11500



+17200



+11500



+17200



+11500



+17200



+11500



+17200



+11500



+17200



+11500



+17200



+11500



+17200



+11500



+17200



+11500



+17200



+11500



+17200



+11500



+17200



+11500



+17200



+11500



+17200



+11500



+17200



+11500



+17200



+11500



+17200



+11500



+17200



+11500



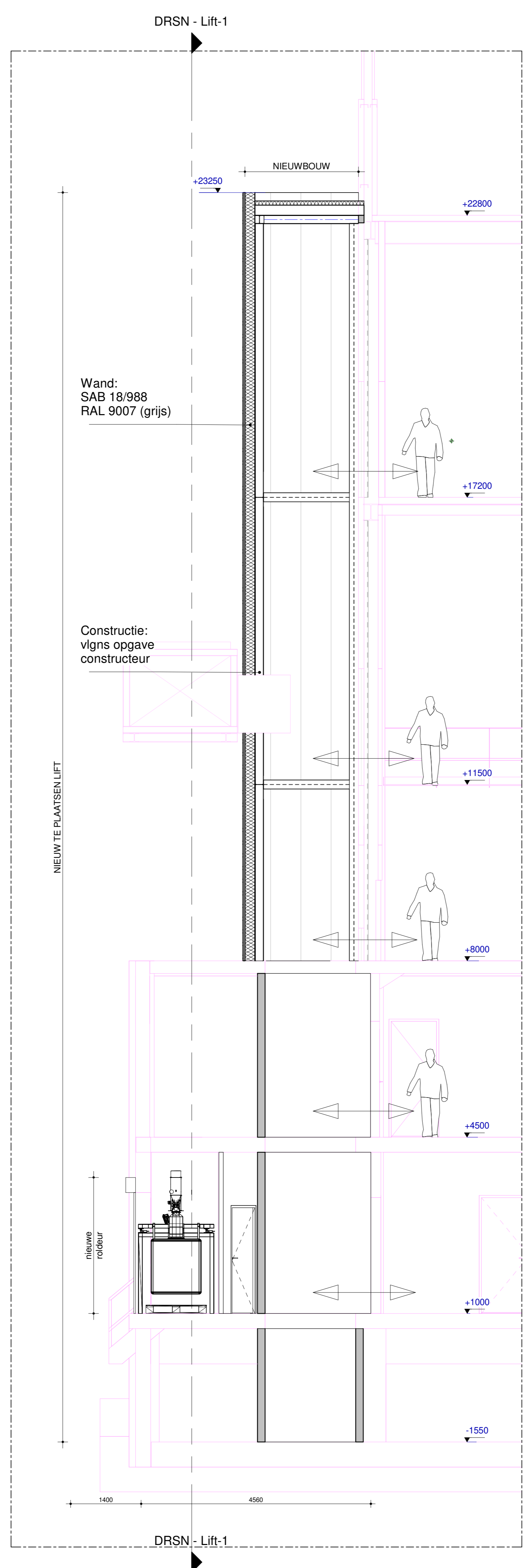
+17200



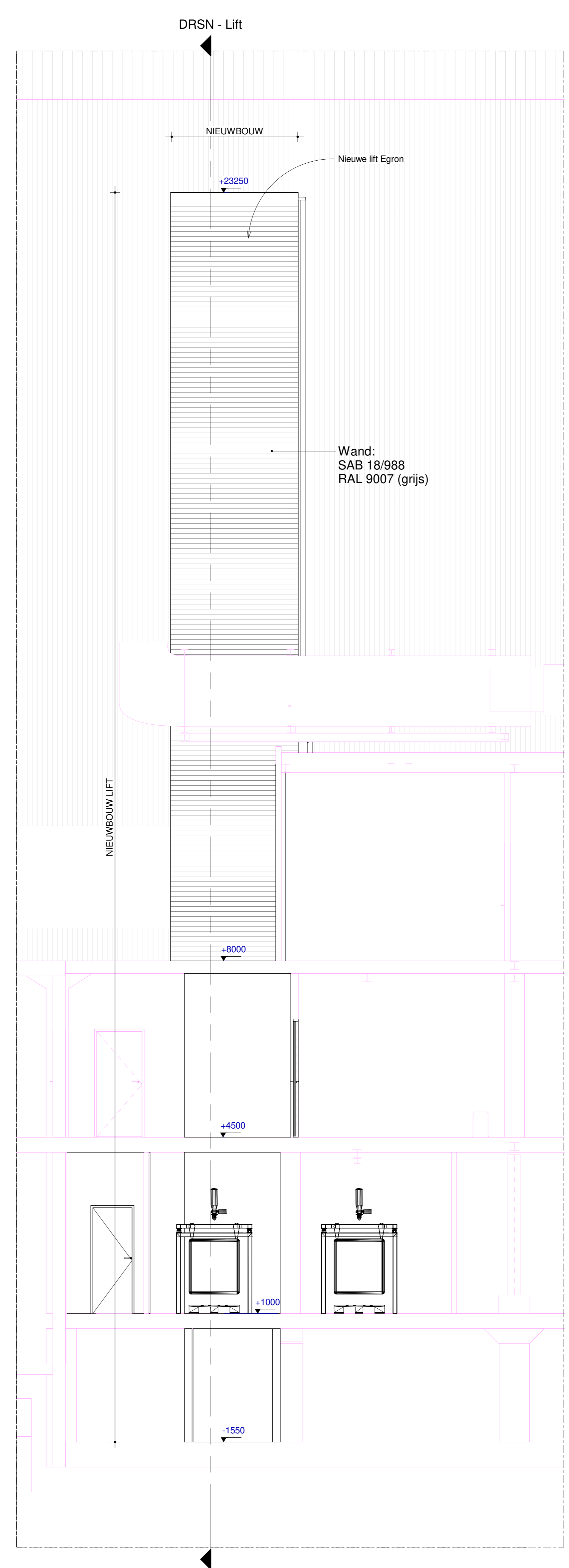
+11500



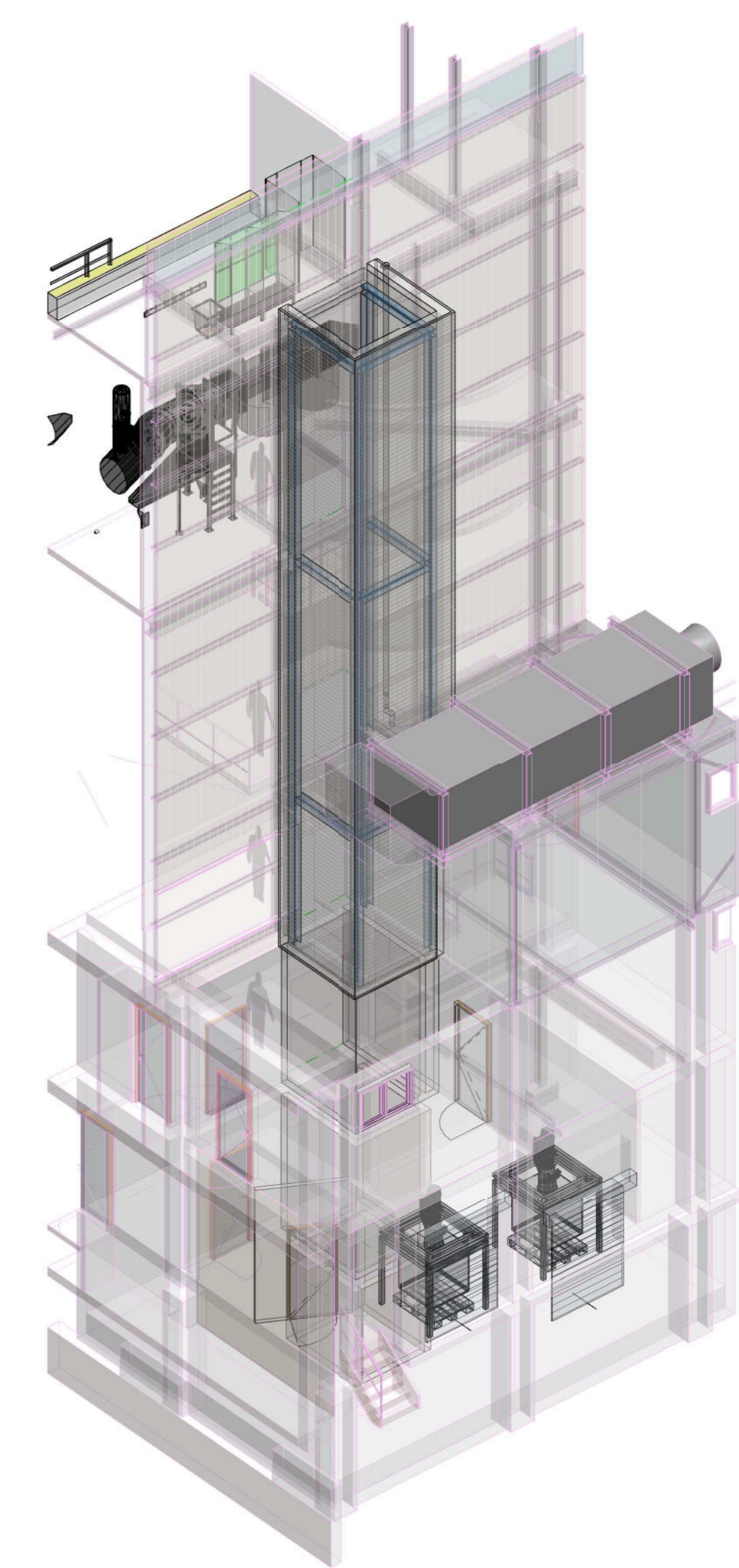
+17200



DRSN - Lift

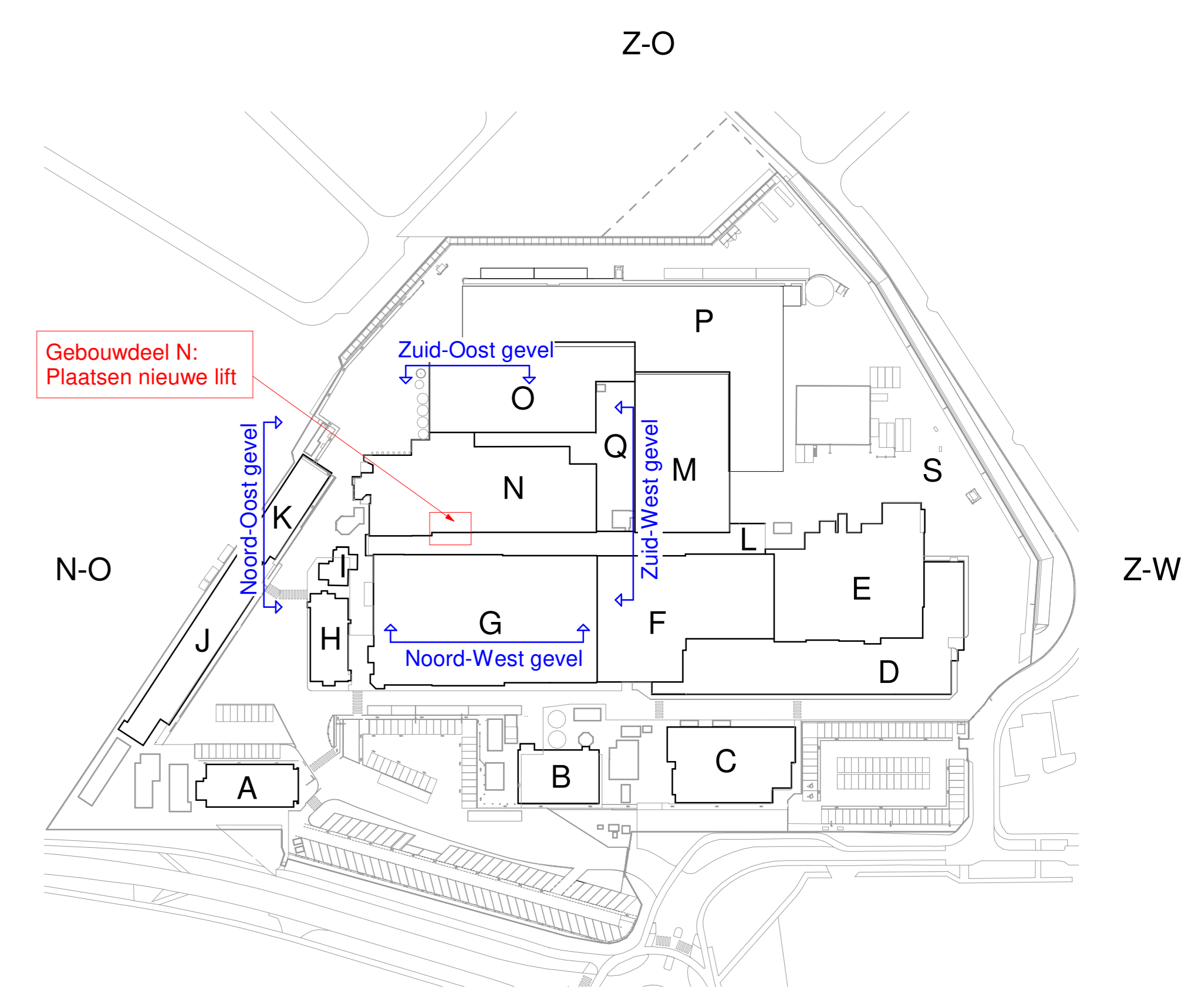


DRSN - Lift



3D - Noord

RENVOOI	BRANDVOORZIENINGEN
	Vluchtroutesandiging
	Vluchtroute
	brandblusser
	handbrandmelder
	brandslanghaspel
	slow-whoop
	rookmelder
RENVOOI	3D MODEL DERDEN
WSP	SGU007135 - 23-09-2022
RENVOOI	BOUWKUNDIG
	sandwichpanelen steenwol gevuld
	bestaand
	nieuw
	Positie stofzuiger
	HWA



RENVOOI	KADASTRAAL BEKEND
Gemeente	Nunspeet
Sectie	A
Nummer	2183 / 5469 / 5474 / 3375 / 3376 / 3377

**BESTEK**  
 N: Bouwdeel\_Specialities (Niro, Luwa, Egron)

**KIENHUIS**  
 BOUWMANAGEMENT

plan : Nieuwbouw Egron lift  
 opdrachtgever : Nestlé, Nunspeet  
 onderwerp : Nieuw te bouwen LIFT

projectnr. : 18\_063-4  
 projectleider : Ing. Y. Bakkali  
 ass.projectleider :  
 tekenaar : K. Peters

formaat : A0  
 schaal : 1:50 / 1:100  
 datum : 18-11-2022  
 blad : N\_BK-05